

NEWSLETTER

SPRING 2014



FROM THE COMMISSIONER

Major construction occurs in 2014 as part of the New Haven - Hartford - Springfield (NHHS) Rail Program. Station construction will take place in Wallingford, Meriden and Berlin and the Program will begin preparing the roadbed for installation of a second track at various locations along the corridor. All of this work will facilitate a successful service launch in late 2016.

One of the Program’s main goals is to increase the number of passenger trains operating between New Haven, Connecticut and Springfield, Massachusetts. Once the new Connecticut service is launched, the frequency of weekday round trip trains will increase from 6 to 17 trains between New Haven and Hartford and up to 12 trains between New Haven and Springfield. This will greatly expand travel options not only between these communities, but to the entire region.

The New Haven-Hartford-Springfield rail corridor will play a critical role in Connecticut’s future and will serve as the backbone for regional service within and beyond New England.

James P. Redeker
Commissioner,
CT Department of Transportation



- [Construction Moves Forward.....p.1 - 2](#)
- [Customer Service Enhancements.....p.2](#)
- [Quick Terms.....p.2](#)
- [NHHS Rail Program Launches
Interactive Map.....p.3](#)
- [Gov. Malloy Announces Funds to Spur Economic
Growth and TOD along Expanding CT
Transportation Corridors.....p.3](#)
- [Did You Know?.....p.3](#)
- [Website Photo Gallery.....p.4](#)
- [Website/Facebook/Twitter:
Reaching A Wider Audience.....p.4](#)

Construction Moves Forward

This year’s construction season includes a wide variety of activity. All of this work is in preparation for launching Connecticut’s new passenger rail service in late 2016. The chart below highlights the work scheduled to occur this year.

Activity	Purpose	Construction Start Date	Location
Realignment of Existing Track One	Straighten out track curves to achieve higher speeds	Spring 2014	North Haven Wallingford Hartford
Communication and Signal Systems (installation and site work)	Install “state-of-the-art” systems to support safe service	Summer 2014	New Haven North Haven Wallingford Meriden Berlin New Britain
Roadbed Preparations (site grading, drainage, retaining wall, bridge, culvert and grade crossing improvements)	Create roadbed and improve grade crossing to support reinstallation of Track 2	Fall 2014	North Haven Wallingford Meriden Berlin Newington Hartford
Station Construction	Provide new stations/ amenities to enhance passenger experience and shorter boarding/ deboarding times	Fall 2014	Wallingford Meriden Berlin Hartford

**start dates are estimates and subject to change.*

Construction at stations will generally include the installation of high-level platforms, an overhead pedestrian bridge, passenger information display boards, ticket vending machines, and one electronic vehicle charging station. Site specific improvements are listed on Page 2...

Construction Moves Forward (Continued from Page 1)

Wallingford: A new station will be constructed near the corner of Parker Street and North Cherry Street. Parking lots will be provided at North Cherry Street and Route 5 with a capacity of approximately 220 parking spaces. Passengers will continue to use the current station until the new station is opened in late 2016.

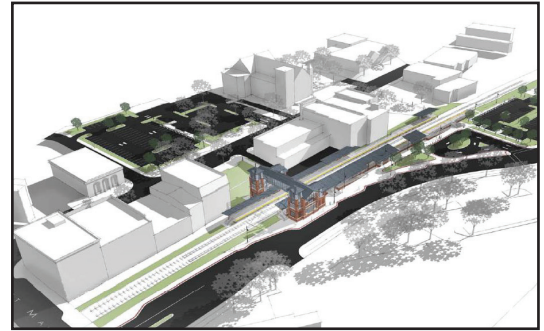
Meriden: A new station will be constructed to the south as a replacement for the existing station. A new parking lot with a capacity of approximately 80 vehicles will be constructed. An additional 225 spaces will be accommodated in a parking garage to be built at the corner of Colony Street and Church Street. This is part of a separate TOD initiative being developed through a multi-state agency task force.

Berlin: A new station will be constructed adjacent to the existing historic station, along with a new parking lot with a capacity of approximately 220 vehicles. The existing station will be renovated and reused by the Town of Berlin.

The work listed above will incorporate cutting edge design elements, such as wayside horns at grade crossings and platform snowmelt systems.

Hartford: Improvements will begin in early 2015. A new Americans with Disabilities Act (ADA) accessible, 260 foot, high-level platform will be constructed on top of the existing station.

To learn more about these design elements, visit the Program website at www.nhhsrail.com or the *Quick Terms* section of this newsletter.



Rendering of proposed Meriden Station



Rendering of proposed Berlin Station

Customer Service Enhancements

The NHHS Rail Program is committed to enhancing customer service at NHHS stations. Such enhancements include ticket vending machines (TVM) and variable messaging signs (VMS). These elements will provide customers with state-of-the-art ticketing and service information.

TVM's or kiosks, allow customers to purchase train tickets throughout the station rather than waiting at a ticket window. Ultimately, they will lower operating costs by reducing staffing needs.



(TVM)



(VMS)

In an effort to provide real-time information, VMS inform the public of train schedules, delays and approaching trains. This “text based messaging system” will enhance the customer experience and make the stations fully compliant with the Americans with Disabilities Act.

Quick Terms

Wayside horns: Used by railroads at grade crossings to warn the public that a train is approaching. Wayside horns (also known as Automated Horn System) can be used in place of a locomotive horn. They simulate the sound of a train horn, projecting the sound from a pole-mounted horn(s) at the grade crossing. By projecting the horn sound directly at the crossing roadway(s) and eliminating the use of the locomotive horn, noise is concentrated in the area of the grade crossing. This is an effective tool in areas with sensitive noise receptors, such as in residential neighborhoods, hospitals or parks.

Automatic snowmelt system: Utilizing a platform embedded pipe system, heaters and pumps, the system circulates heated glycol to melt snow. This system improves customer safety and reduces station operating costs by reducing the need for multiple personnel to shovel snow off the platform.

Ticket Vending Machine (TVM): A “kiosk” that produces a train ticket. It is typically located at a station and provides the benefit of lowering operating costs by reducing staffing needs.

Variable Messaging Sign (VMS): An electronic sign with scrolling text that is installed at stations to inform the public of train schedules, delays and approaching trains.

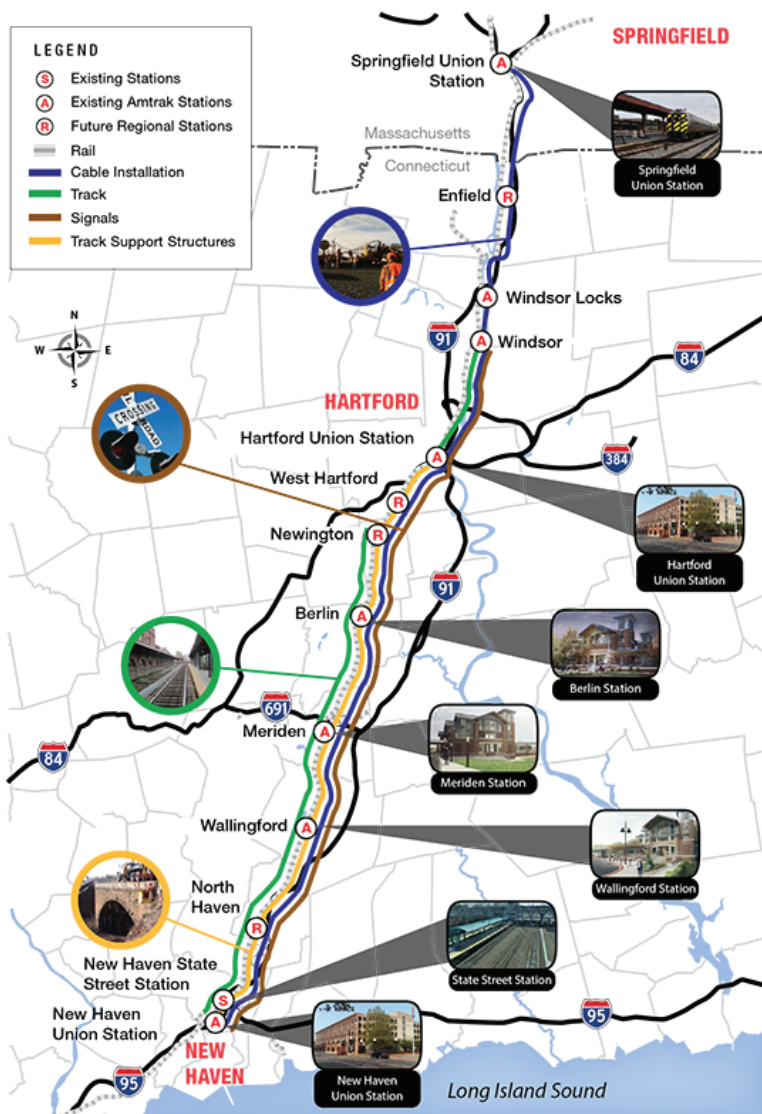
Positive Train Control: Integrated command, control, communications and information systems used for controlling train movements safely, securely, precisely and efficiently.

NHHS Rail Program Launches Interactive Map

We have launched an Interactive Map on our website (www.nhhsrail.com), which provides users with an overview of proposed infrastructure improvements and schedules as well as a glossary of “rail” terms.

The map includes detailed information regarding cable installation activity, track support structures, and station improvements, among others.

For more information visit www.nhhsrail.com.



DID YOU KNOW?

Protecting endangered species is an important part for the NHHS Rail Program. An example of this effort was the CTDOT and CTDEEP Wildlife collaboration to ensure reptile migration pathways would not be negatively impacted by the Programs proposed improvements. CTDOT designed innovative turtle passage improvements that will allow Eastern Box Turtles, a State of Connecticut species of concern, to travel the rail line without risk of being injured by a train.



PHOTO COURTESY OF CTDEEP

Another example is the incorporation of a specially formulated grass seed product designed to temporarily stabilize steep embankment slopes until the grass can be established. Use of this product, a first for CTDOT, is being employed as an alternative to more traditional products such as netting, which species like the Eastern Hognose Snake, another State of Connecticut species of special concern, can become trapped and injured.

Gov. Malloy Announces Funds to Spur Economic Growth and TOD along Expanding CT Transportation Corridors

On April 30, Governor Dannel P. Malloy announced the creation of a \$15 million Transit Oriented Development (TOD) Pre-Development and Acquisition Fund to provide financing that will encourage developers to carry out TOD in communities with station stops along the CTfastrak and New Haven - Hartford - Springfield (NHHS) transit corridors.

TOD prioritizes the development of a mix of uses – housing, retail and commercial office space – near transit hubs to encourage the use of mass transit, reduce reliance on driving, and foster more dense, livable, walkable communities.

To learn more visit www.governor.ct.gov.

Website Photo Gallery

Construction photos are posted weekly to keep the public informed of construction progress. Visit the photo gallery section of the website at www.nhhsrail.com/gallery.

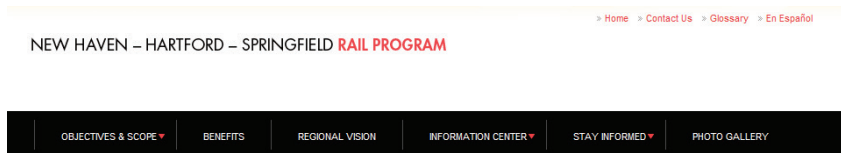


Website/Facebook/Twitter: Reaching A Wider Audience

The New Haven-Hartford-Springfield (NHHS) Rail Programs' website, Facebook page and Twitter feed provide the public with remote and mobile access to a wide range of information.

In addition, email messages of news postings and upcoming meetings are sent to those who register for email updates on the website. Viewers may also submit comments or questions to the Program team and receive email responses.

www.NHHSrail.com



NEW HAVEN – HARTFORD – SPRINGFIELD RAIL PROGRAM



Gov. Malloy Announces Fund to Spur Economic Growth and Transit Oriented Development Along Expanding Connecticut Transportation Corridors

On April 30, 2014, Governor Dannel P. Malloy announced the creation of a \$15 million Transit Oriented Development Pre-Development and Acquisition Fund to provide financing that will encourage developers to carry out transit oriented development in communities with station stops along the CTFasttrak and New Haven-Hartford-Springfield (NHHS) transit corridors. [Learn more >>](#)

Get Project Updates

Email Address:

City/Town:

If you do not see your City/Town from the current list please type it in the space provided.

About the Program

The New Haven-Hartford-Springfield (NHHS) Rail Program will provide significant new regional passenger rail service options as a key component of a robust and vibrant multi-modal regional transportation system.



GET INVOLVED & STAY INFORMED

NHHS Contact List

Nearly 2,000 residents, businesses, local groups and public agencies have already subscribed to the NHHS contact list! Subscribing to the contact list on the www.NHHSrail.com website takes only a few minutes and ensures that you will receive:

- E-alerts with program updates, including updates on cable installation
- Notices of upcoming public meetings
- Future issues of the program newsletter

[subscribe >](#)

Questions & Comments

The program website (www.NHHSrail.com) provides an easy way to ask questions or provide comments to the program team and receive a response via email.

